

7.1.4: Water conservation facilities available in the Institution

Rain water harvesting:

The college has Rain Water Harvesting (RWH) facility between C Block and D Block to collect the rooftop runoff. Rainwater is collected from a roof and redirected to a pit so that it seeps down and restores the groundwater.

Plan for Rain water harvesting Pit-C Block & D Block



Rain water harvesting Pit-C Block & D



Maintenance of water bodies and distribution system in the campus

The ground water is pumped into storage tanks located at different places in the campus. There are numbers of overhead storage tanks in the campus. The water is distributed through well laid pipe network. Entire distribution system is well supervised by supervisor to ensure that there are no leakages and wastage of precious water through joints, valves etc. Water from the Bore well is pumped to the overhead tanks. The water from overhead tank is distributed to all taps across the campus. Whenever the problems are identified immediate actions are taken for restrict wastage of water. Sample Images of water distribution system as follows.

Water distribution system-D Block



Water distribution system-C Block



Mineral water and RO water facility is arranged in the college campus. Health is wealth, so all the Blocks in the campus enabling safe drinking water supply. It provides healthy and clean drinking water to staff and students. This water is provided to the Faculty Cabins, classrooms laboratory and administration offices through water dispensers. In addition to this water coolers are also provided to the students. The water dispenser having a facility to drink COOL/WARM/NORMAL water. The following table shows the no.of water dispensers and Fridges available in college. Sample photographs of drinking water facility is shown in the following.

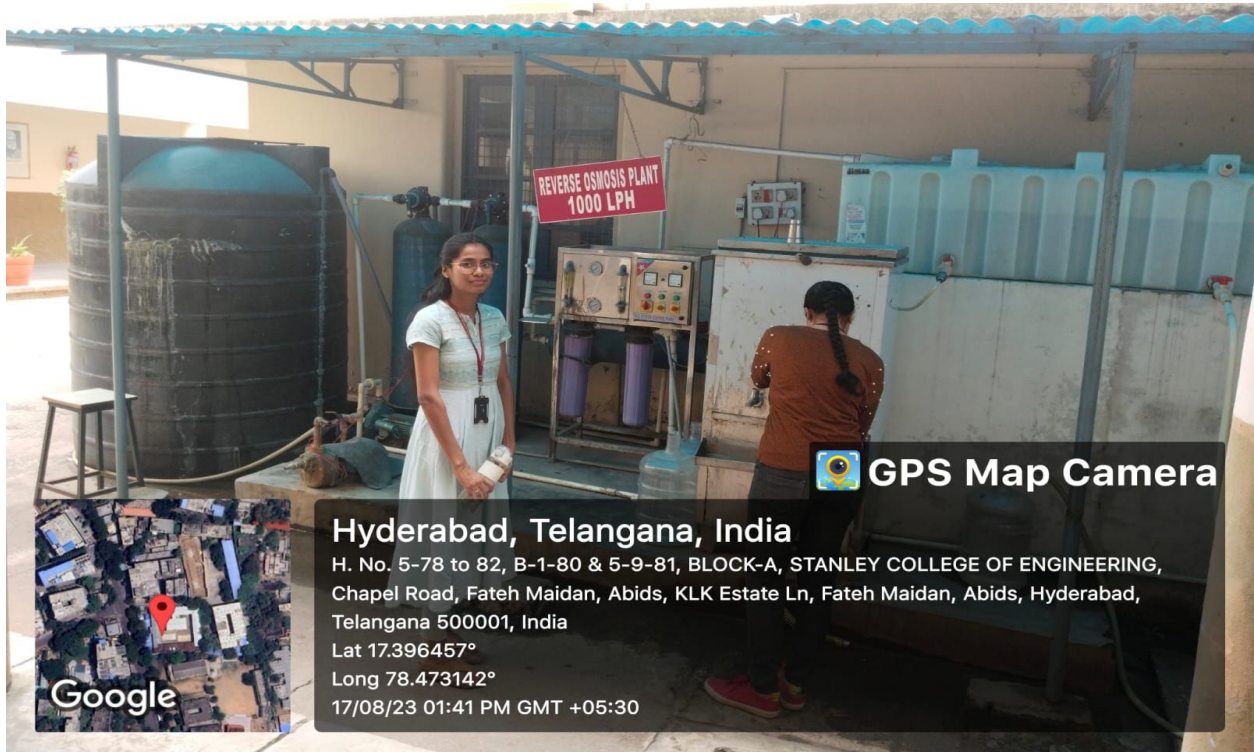
Details of drinking water facility in various blocks on the campus

I.No	Location	No.of Water Dispensers	No.of Drinking water cooler
1.	A Block	3	1
2.	C Block	-	2
3.	D Block	3	-
4.	E Block	6	3
5.	Canteen	1	-

RO Water Facility-E Block



RO Water Facility-A Block



Hyderabad, Telangana, India

H. No. 5-78 to 82, B-1-80 & 5-9-81, BLOCK-A, STANLEY COLLEGE OF ENGINEERING,
Chapel Road, Fateh Maidan, Abids, KLK Estate Ln, Fateh Maidan, Abids, Hyderabad,
Telangana 500001, India
Lat 17.396457°
Long 78.473142°
17/08/23 01:41 PM GMT +05:30

RO Water Facility-C Block



Hyderabad, Telangana, India

H.NO-5-78 TO 82, Chapel Rd, Fateh Maidan, Abids, Hyderabad, Telangana 500001, India
Lat 17.397172°
Long 78.473474°
20/02/24 10:13 AM GMT +05:30

Water Dispenser D- Block (I Floor)




Water Dispenser D- Block (Ground Floor)



Cool Water Fridge- C- Block (I- Floor)



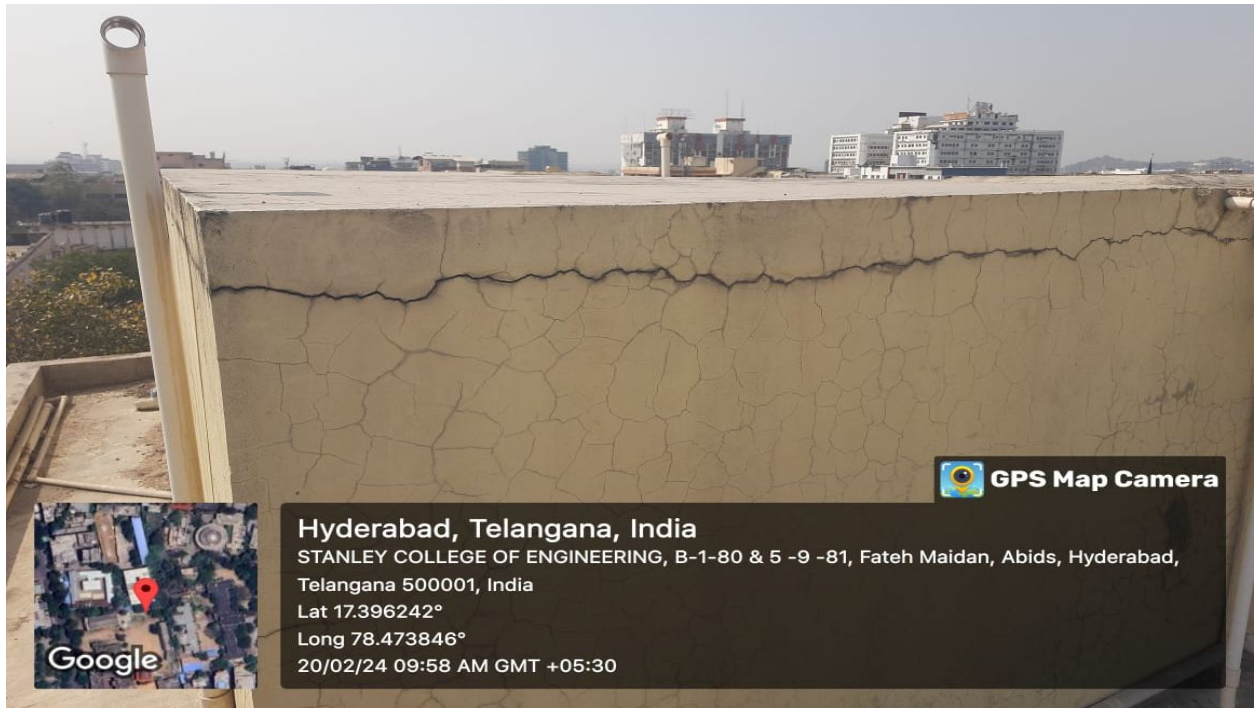
Hyderabad, Telangana, India
M C H-18, Fateh Maidan, Abids, Hyderabad, Telangana 500001, India
Lat 17.397266°
Long 78.473373°
20/02/24 10:15 AM GMT +05:30


 **GPS Map Camera**

Overhead Water storage unit at C Block for water distribution



Overhead Water storage unit at E Block for water distribution



 **GPS Map Camera**



Hyderabad, Telangana, India

STANLEY COLLEGE OF ENGINEERING, B-1-80 & 5 -9 -81, Fateh Maidan, Abids, Hyderabad,
Telangana 500001, India

Lat 17.396242°

Long 78.473846°

20/02/24 09:58 AM GMT +05:30